

Speech Recognition Troubleshooting Tips

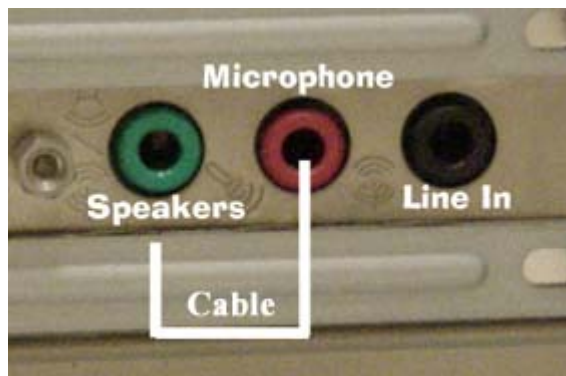
Check microphone using Microsoft's sound recorder

**START>ALL
PROGRAMS>ACCESSORIES>ENTERTAINMENT>SOUND
RECORDER**

Click on red record button and speak into microphone. The green line should change wavelengths as it picks up sound.



If the green line remains unchanged as you speak into the microphone you need to check and make sure you are plugged into the correct microphone input on your computer. Sometimes, it may look like it is plugged in but it is not completely plugged in. Firmly push it into its input. Below are a few examples of a typical microphone input. Notice the microphone icon to the left of the input to help you identify the correct input. After checking these try the sound recorder again.

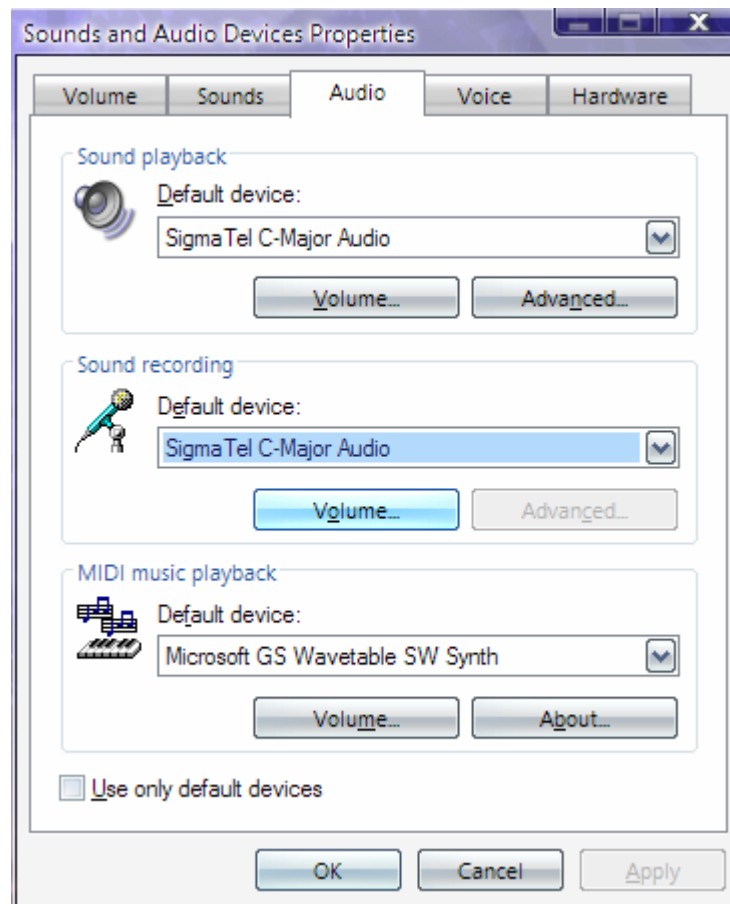




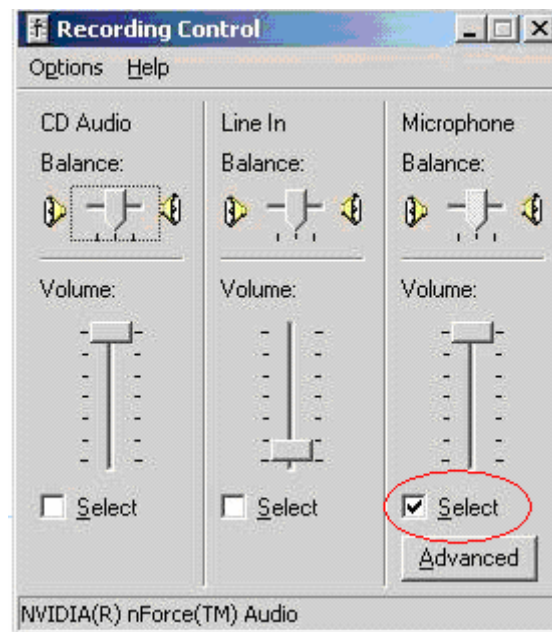
If you still can not record sound with the Microsoft sound recorder, check your sound settings in the control panel to ensure the microphone is not muted. To do this, click on

START>SETTINGS>CONTROL PANEL>SOUNDS AND AUDIO DEVICES

Depending on your audio card, your screen may appear different. What you are looking for is the sound recording settings. On this screenshot, I can find it on either the 'AUDIO' tab or the 'VOICE' tab.



If you click on the volume button for the sound recorder the following screen should appear. This is the screen you are looking for to verify microphone settings and the little checkbox is selected below the volume settings.



After this is selected try the voice recorder again.

[Main Menu](#)