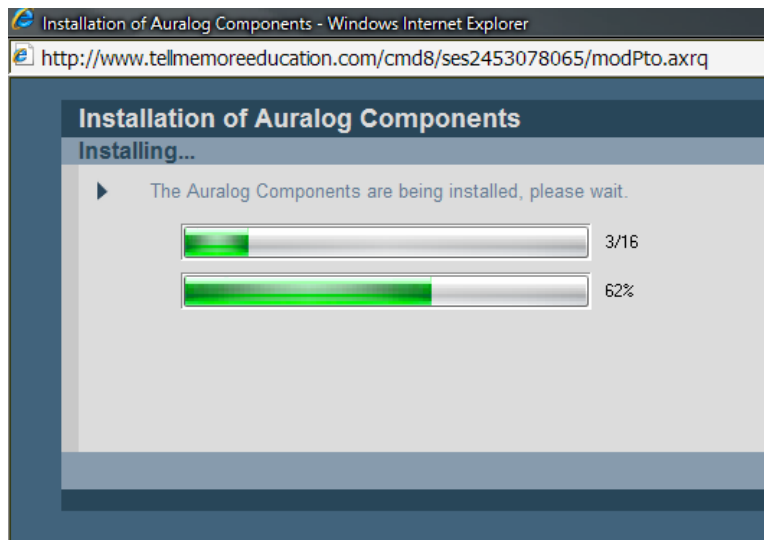


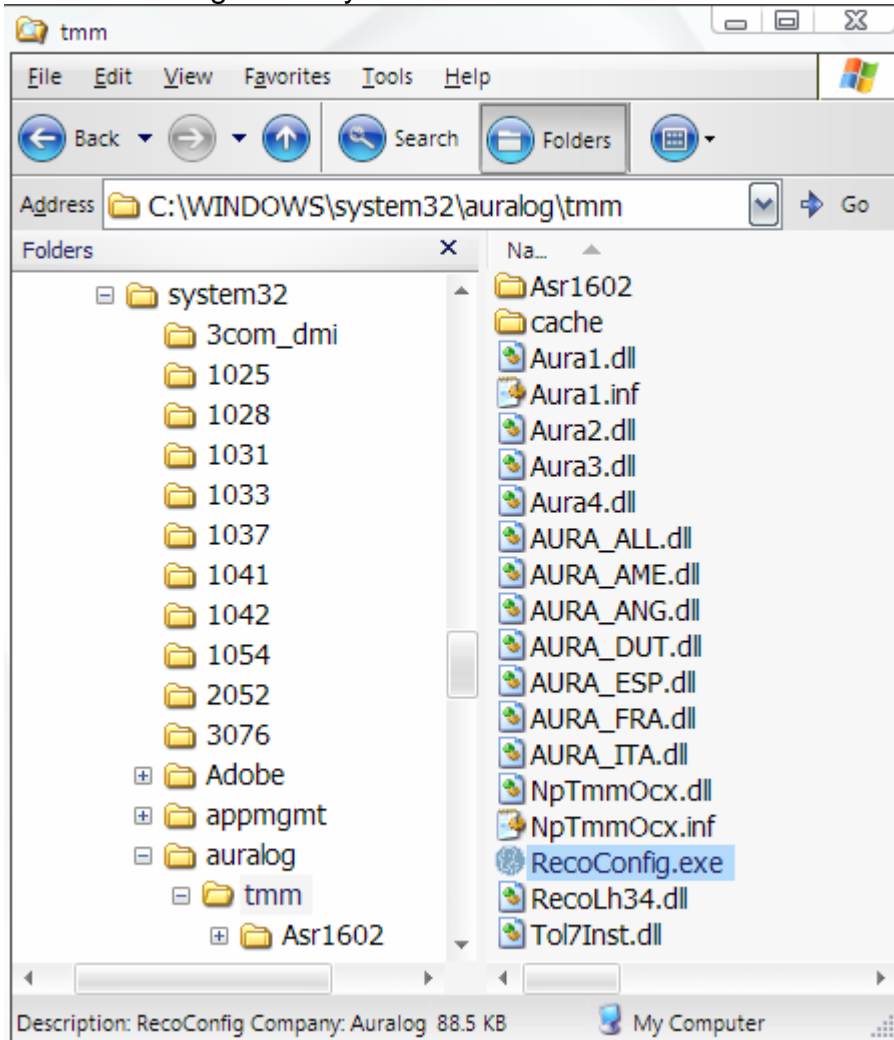
## **Component Installation Tips**

**TIP: MUST BE DONE WITH ADMINISTRATIVE PRIVILEGES!!**

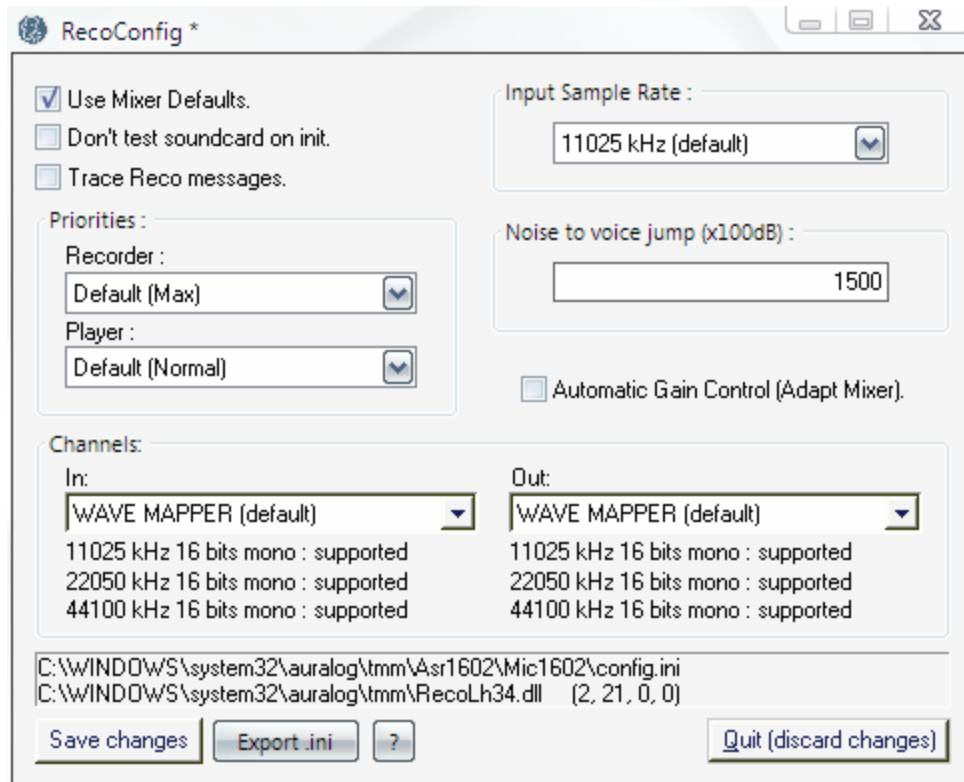
If the components are stuck in what seems to be a loop, it may be because you have a sound card with multiple inputs such as the ones found in Microsoft's Windows Media Center operating system.



The components are actually installed but the software does not know which input to use. To fix this, right click on your **START** button and click on **EXPLORE**. Navigate to the following directory:



Double click on the **RecoConfig.exe** program and select the checkbox, '**Use Mixer Defaults.**' Then click on the **Save changes** button on the bottom left corner of this screen.



[Main Menu](#)